

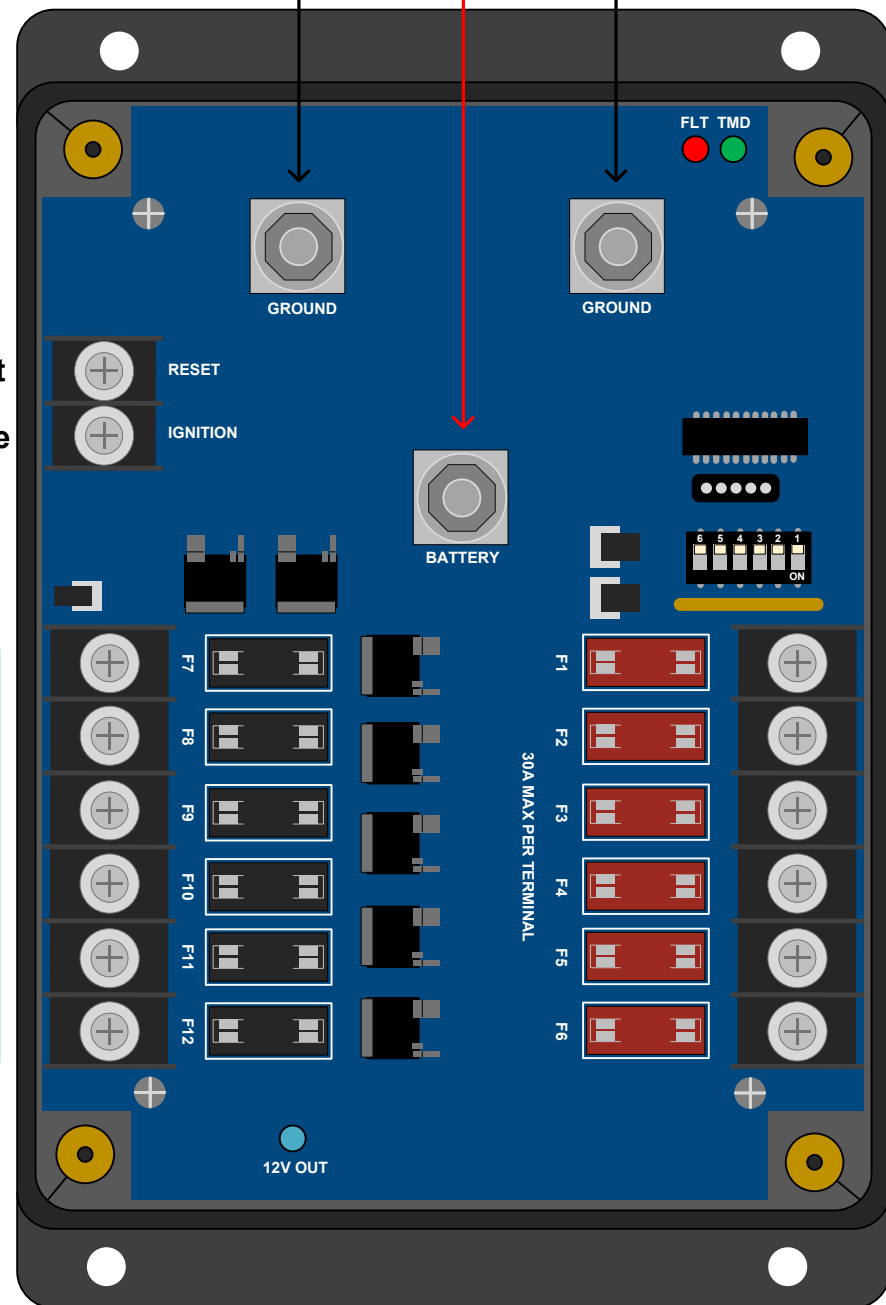
**Inputs:**

- M6 Power Input, 125 amp fuse required with a 6 Ga. wire.
- Ignition Input (12 VDC+) activates Timer and Ignition circuits.
- Reset Terminal: When 12 VDC+ is present at this terminal the Timed Outputs shut off.

**Ground Bus:**

- M6 Stud: main Ground to Battery
- 125 amp max Total Load

**M6 Power Input**



**Red LED**  
Fault Status  
**Green LED**  
Timer Status

**Programming**  
Header

**Six-Position**  
DIP Switch

**Blue LED**  
Output Status

**Do Not Exceed Torque Setting  
Damage Will Occur!**

- Power and Ground M6 Inch Studs: 50 in/lb.
- Terminals Block Screws Torque: 15 in/lb.

The CTF-B6T6G Fuse Panel provides six Battery Hot and six Timed Hot circuits with a two-stud ground bus. The Timer instructions on the reverse page will provide programming instructions for changing the Low Voltage Disconnect Setting, Timed Interval Setting, Infinite Mode Operation, and the diagnostic LED status codes. With all emergency vehicle installations the Vehicle Manufacturer and Component Manufacturer Modifier Guides and instructions should be followed at all times. The installation and servicing of these components should only be completed by a trained emergency vehicle technician.

**Red LED Fault Status:**

- Off: No Faults
- Slow Flashing 15 Seconds: Low Voltage is occurring
- Steady Red: Under Voltage has occurred
- Rapid Flash: Over-Voltage has occurred

**Green LED Timer Status:**

- Solid Green: Ignition On
- Flashing Green: Timed Mode
- Off: Outputs Off

**Six-Position DIP Switch:**

- Positions 1 to 4 control the Timed Interval
- Position 5 controls the Ignition Sense function
- Position 6 controls the Low Voltage Disconnect

**RST Pin: Timer Reset**

- 12 VDC+ to the RST pin will shut down the timer.
- A momentary input is recommended.
- The RST pin will clear the LED fault codes.

**IG Pin: Ignition Sense**

- Ignition Sense 12 VDC+
- Requires a 1 amp fuse and an 18 Ga. wire.

**Mating Terminals for the Power 18:**

- SSFT-6-1822 – 18-22 Ga. #6 Block Fork
- SSFT-6-1416 – 14-16 Ga. #6 Block Fork
- SSFT-6-1012 – 10-12 Ga. #6 Block Fork
- SSRB-25-06NI – 6 Ga. M6 Ring Barrel

**Timed Hot Circuits: Black Fuse Holders**

- The IGN input pin activates the Timer Card.
- 30A per terminal, 75A max total load, ATO fuses.

**Battery Hot Circuits: 30 Amps Max Per Fuse**

- Fuse 1: \_\_\_\_\_
- Fuse 2: \_\_\_\_\_
- Fuse 3: \_\_\_\_\_
- Fuse 4: \_\_\_\_\_
- Fuse 5: \_\_\_\_\_
- Fuse 6: \_\_\_\_\_

**Timed Hot Circuits: 30 Amps Max Per Fuse,  
75 Amp Max Total Load**

- Fuse 7: \_\_\_\_\_
- Fuse 8: \_\_\_\_\_
- Fuse 9: \_\_\_\_\_
- Fuse 10: \_\_\_\_\_
- Fuse 11: \_\_\_\_\_
- Fuse 12: \_\_\_\_\_

**Input Wire Fuse and Gauge:**

- Fuse the input wire and ignition wire as close to the power source as is practical.
- The power input wire and ground stud wire must be the same gauge and should be sized based upon the intended load and wire length.
- 125 amps or less at 25' = 6 Ga.
- 50 amps or less at 25' = 8 Ga.

**TECHNICAL SUPPORT & SALES CONTACT:**

Phone: 844-423-7200  
Email: sales@allfleetsolutions.com  
Web: www.allfleetsolutions.com